

Dr Conn Haughey, Senior Registrar, Northern Ireland Hospice

Managing Your Care: Information Evening, Wednesday 10th September 2014

Brainwaves NI in partnership with NICaN Brain & CNS Group



Dr Conn Haughey
Senior Registrar
Northern Ireland Hospice



**Community Specialist Palliative
Care Team**

www.nihospice.org

Aim



To increase understanding of the role of the Community Specialist Palliative Care Team

www.nihospice.org

Community specialist palliative care team



The Community Specialist Palliative Care Team comprises of :

- Hospice Nurse Specialists - Band 7
- Hospice Community Nurse – Band 6

With support from:

- Consultant in Palliative Medicine
- Social Worker
- Carers Service – support groups, complementary therapy
- Volunteer Services - volunteer drivers

www.nihospice.org

Role of Hospice Nurse Specialist / Hospice Community Nurse



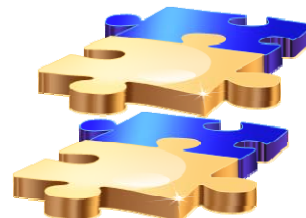
- The Hospice Nurse Specialist (HNS) provides specialist advice, care and support for patients and their families in the community who have complex palliative care needs.
- The Hospice Community Nurse (HCN) works under the direction of the HNS in providing support for patients and their families.
- We work in collaboration and liaise with existing statutory and voluntary organisations to promote a seamless service for patient's and their families.

www.nihospice.org

Components of the role



- Clinical
- Education
- Professional Development
- Research/ Audit
- Leadership and Management



www.nihospice.org

Source of referrals



- General Practitioner
- District Nurse
- Macmillan Nurse
- Consultants
- Social Worker
- Hospice
- Macmillan Unit



www.nihospice.org

Criteria / Reasons for Referrals



Criteria : The patient must have advanced malignant or non-malignant disease with complex needs

Reasons for referrals:

- Holistic assessment of palliative care needs
- Specialist advice and guidance on symptom management
- Advice and support for psychological / spiritual concerns
- Support for patients and carers who are experiencing complex social problems

www.nihospice.org

Levels of intervention



- Advice, information and support may be accessed by professionals with no direct patient contact
- Consultative 'one off' joint visit with referrer
- Initial assessment visit, with sign posting to other services
- Short term intervention, with the intention to discharge. May be re-referred should the need arise
- On going support for complex needs, with regular contact and reviews
- Terminal phase of illness and bereavement support
- 24 hr 'On Call Service' provided to GPs and DNs for advice on symptom control

www.nihospice.org

Timing of referrals



- Diagnosis- if advanced
- During treatment
- Post treatment
- Terminal phase



www.nihospice.org

Where is the service available



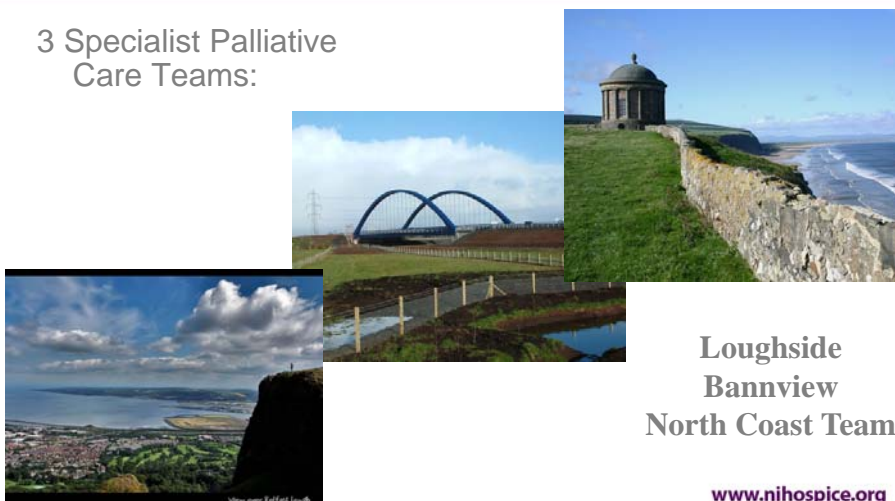
- The service is available in the Belfast Trust, South Eastern Trust, Western Trust- (Southern Sector) and the Northern Trust
- 9 Community Specialist palliative Care Teams

www.nihospice.org

Northern Trust

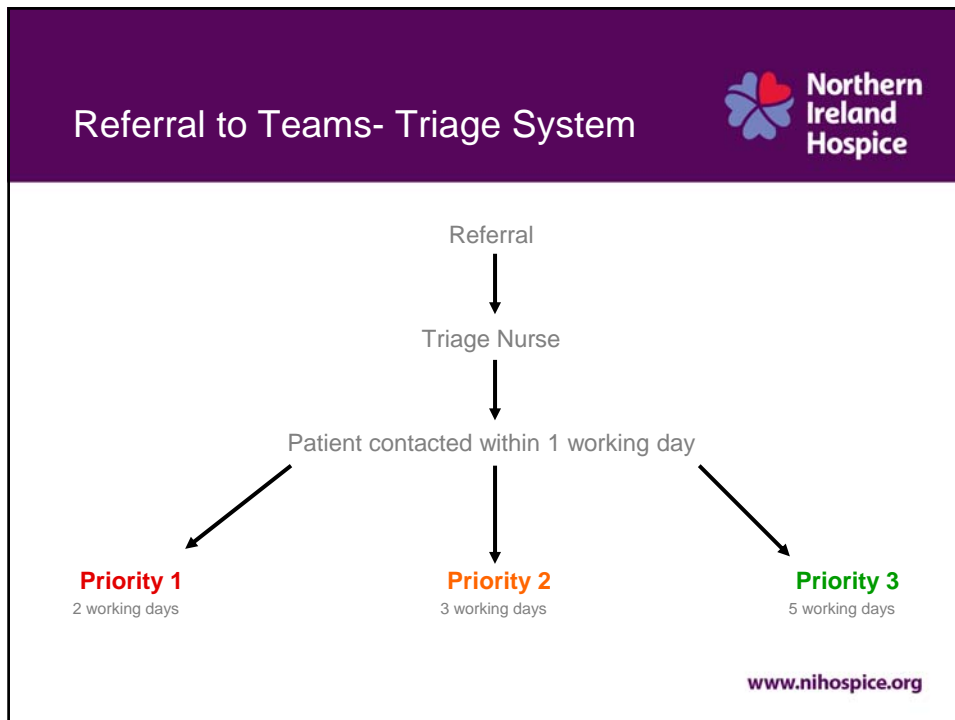


3 Specialist Palliative Care Teams:




**Loughside
Bannview
North Coast Team**

www.nihospice.org



Contact details



- Triage Office : Jennymount Business Park
Block 3, North Derby Street
Belfast, BT15 3HN
Tel: 028 90781836
Fax No: 90745421
- Bannview Team : Unit 5B Toome Business Park
21 Hillhead Road
Toomebridge, BT41 3 SF
Tel: 028 79650850
Fax No: 79659792

www.nihospice.org